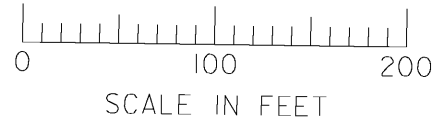


THIS MAP WAS PREPARED FOR
ASSESSMENT PURPOSE ONLY

NE1/4 SW1/4 SEC. 1 T.2N. R.11E. W.M.
WASCO COUNTY

1" = 100'

2N 11 ICA
MOSIER



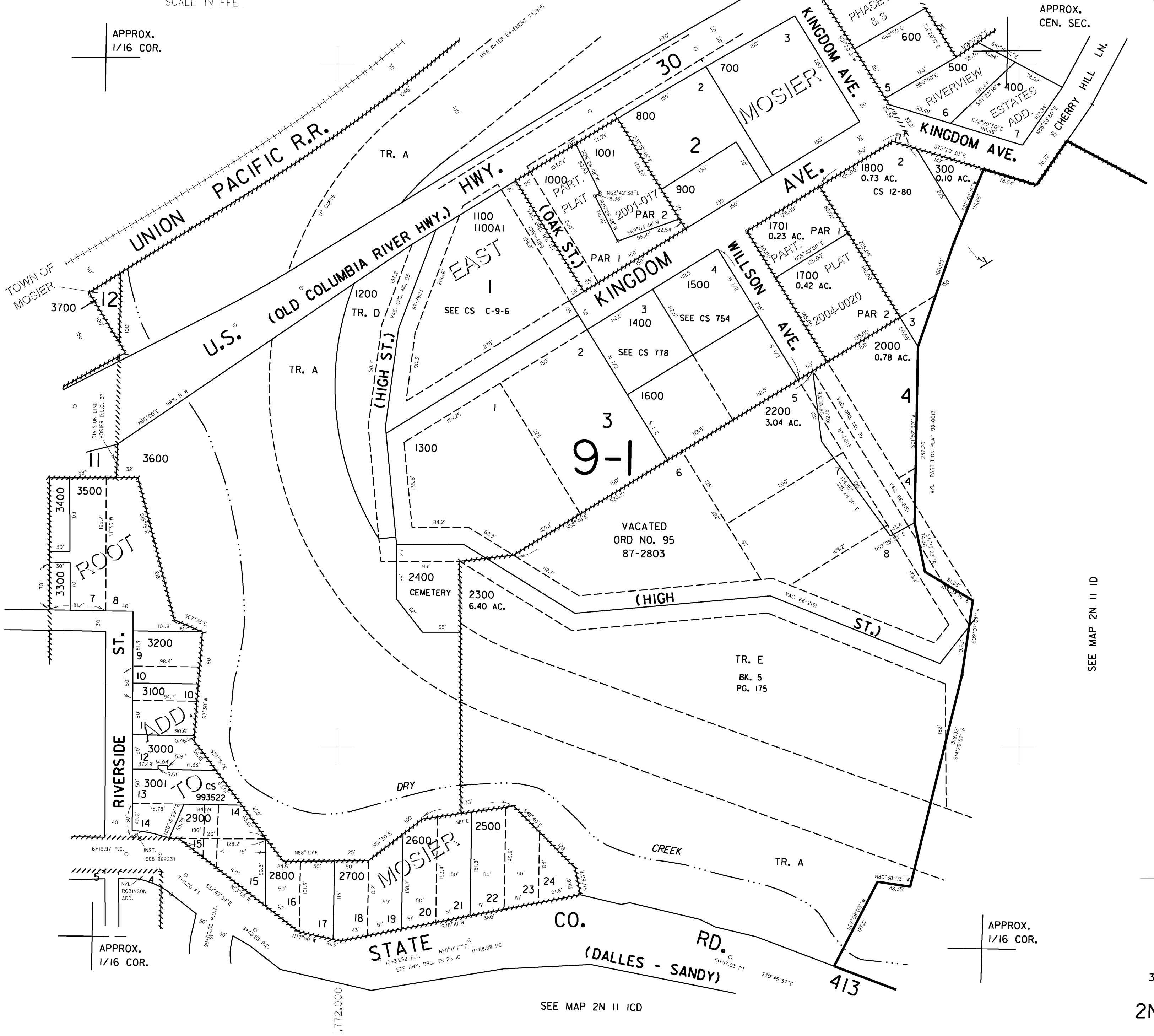
SEE MAP 2N 11 IBD

CANCELLED NO.S

- 100
- 200
- 1900
- 2100
- 3002

APPROX.
CEN. SEC.

APPROX.
1/16 COR.



SEE MAP 2N 11 ICB

SEE MAP 2N 11 ID

736,500

APPROX.
1/16 COR.

APPROX.
1/16 COR.

SEE MAP 2N 11 ICD

Revised
3/17/2005, DLW

2N 11 ICA
MOSIER